

The KOGAWA



795 SQ.FT.



1 BEDROOM



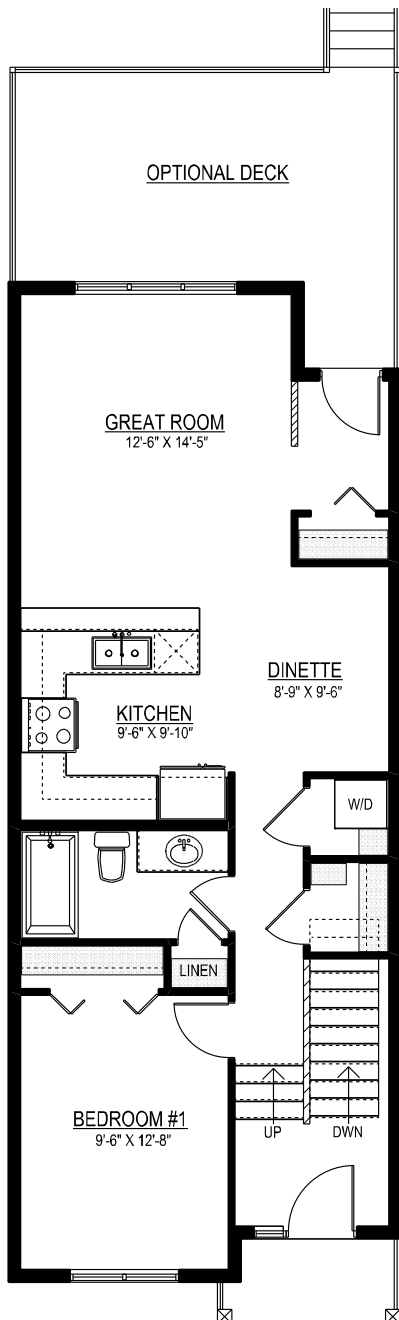
1 BATHROOM

18'



PRAIRIE

MAIN FLOOR 795 SQ.FT.



OTHER ELEVATIONS

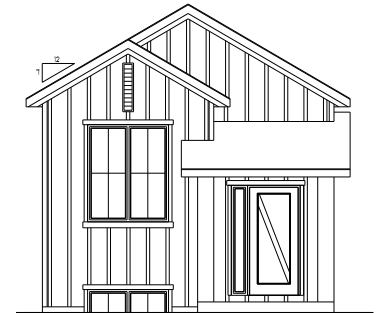
PRAIRIE CONTEMPORARY - SECOND



CRAFTSMAN - SECOND



TRADITIONAL FARMHOUSE - SECOND



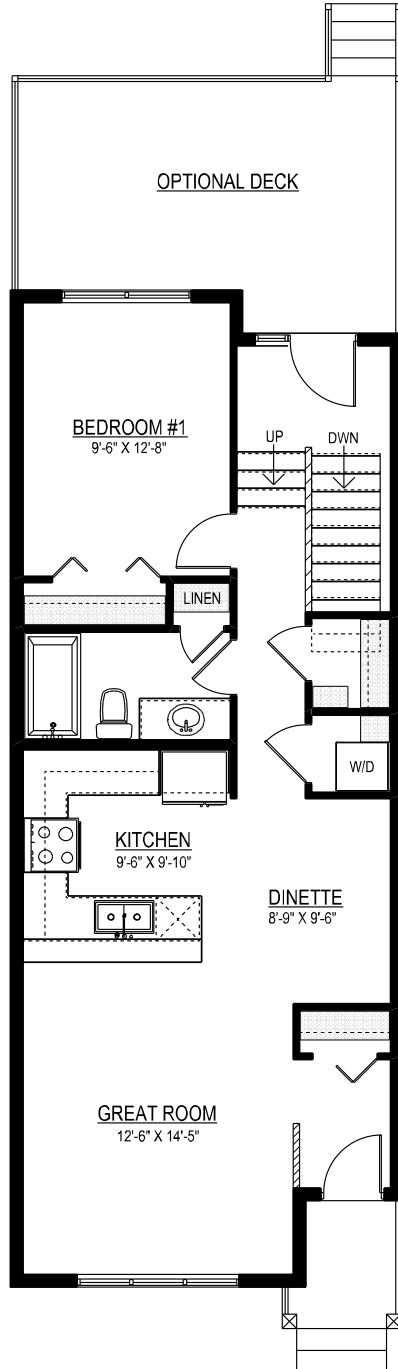
LINCOLNBERG
MASTER BUILDER



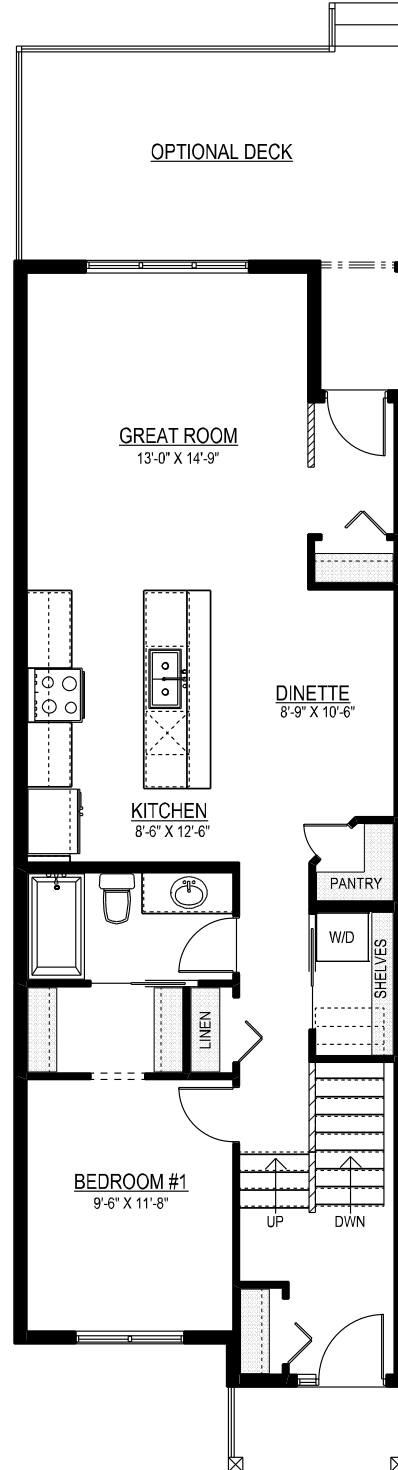
Copyright © Lincolnberg Master Builder, 2020. Revised September 16, 2021 1:52 PM. This plan is the property of Lincolnberg Master Builder. Floorplans, specifications and dimensions shown are approximate, and are subject to change without notice. All rights reserved, including the right to reproduction in whole or in part. Rendering(s) are artist concept only. E. & O.E.

KOGAWA OPTIONS

**MAIN FLOOR
OPTION #1**
795 SQ. FT.

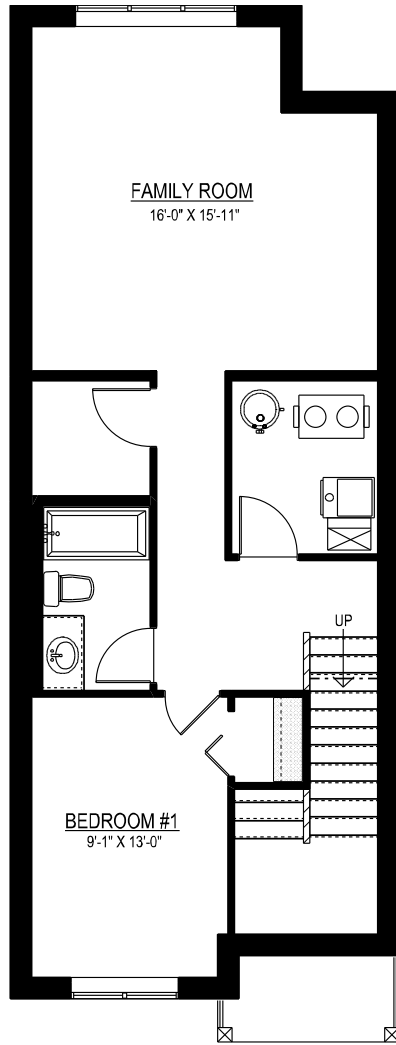


**MAIN FLOOR
OPTION #2**
892 SQ. FT.



KOGAWA OPTIONS

BASEMENT DEVELOPMENT
OPTION
558 SQ. FT.



BASEMENT SUITE DEVELOPMENT
OPTION
558 SQ. FT.

